

# ORCA



ORCA®

MADE IN SWEDEN

TOTAL SOLUTIONS

  
TRELLEBORG  
WHEEL SYSTEMS

# RESILIENT TIRES



The Orca resilient tire was developed using the latest industrial technology to create a superior product with an economic advantage.

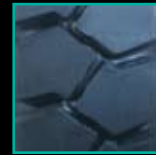
- **Three Stage Construction**
- **Good Wear Qualities**
- **Low Rolling Resistance**

- **NO RISK OF PUNCTURE**
- **LONG WEARING**
- **CUT RESISTANT**
- **HIGH STABILITY  
MAXIMUM SAFETY**
- **LOW ROLLING  
RESISTANCE**



## ORCA

- **TRELLEBORG ENGINEERED**
- **PREMIUM COMPOUNDS**
- **HIGH RELIABILITY**
- **FOR USE IN INDUSTRIAL APPLICATIONS**
- **AVAILABLE IN POPULAR SIZES**



ORCA

Size	Yale Part Number	Rim Width (in.)	Load capacity (lbs.)		Outside Diameter (in.)	Tread Width (in.)	Weight (lbs.)
			6 mph	10 mph			
5.00 x 8	150017776	3.00	2,670	1,935	17.8	3.9	32.2
15 x 4.5 - 8	150121558	3.00	2,000	1,450	14.7	3.9	19.2
16 x 6 - 8	150121555	4.33	3,170	2,300	16.1	5.1	32.0
18 x 7 - 8	150017779	4.33	3,750	2,700	17.5	5.2	41.2
6.00 x 9	150017777	4.00	4,230	3,065	20.4	4.6	50.7
21 x 8 - 9	150121561	6.00	6,190	4,480	20.2	5.5	65.3
6.50 x 10	150017778	5.00	5,810	4,210	22.4	5.4	70.8
23 x 9 - 10	150121560	6.50	7,520	5,450	22.6	6.7	91.5
7.00 x 12	150017780	5.00	6,640	4,810	25.4	5.7	94.4
23 x 10 - 12	150121554	8.00	8,820	6,385	22.4	7.8	104.1
27 x 10 - 12	150121559	8.00	10,680	7,735	26.4	7.8	150.1
7.00 x 15	150121556	5.50	8,620	6,240	28.2	6.4	127.9
7.50 x 15	150121557	6.50	9,600	6,900	29.3	6.7	142.2
28 x 9 - 15	150017781	7.00	9,000	6,520	26.8	7.2	133.6
8.25 x 15	150017782	6.50	10,870	7,875	31.6	6.9	115.7
250 x 15	150017783	7.00	10,472	9,480	27.9	7.4	173.9
300 x 15	150121457	8.00	13,190	9,550	31.8	8.7	218.3

The above load capacities are based on available T.R.A. specifications for load and steering wheels on counterbalanced forklift trucks.